



NUT & BLIND RIVETER

130 Piece Set

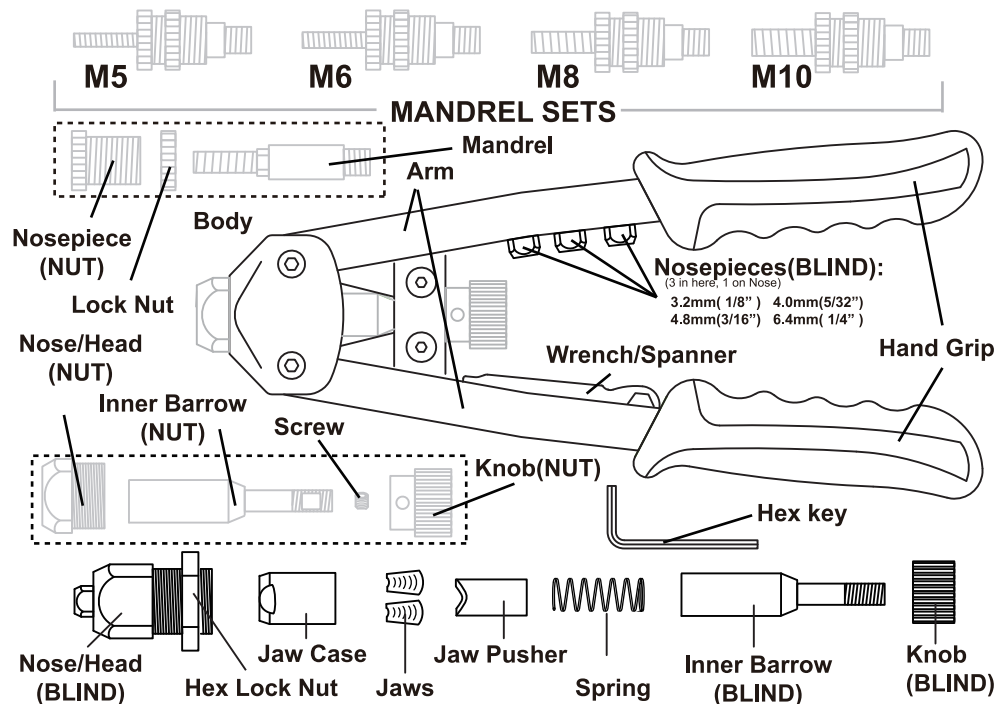
RNB40

INTRODUCTION

This quality riveter is smaller than typical industrial hand riveter and provide effortless functionality, the blind riveter is used to securely join together a wide range of materials such as sheet aluminum, steel, plastic and vinyl's; and nut riveter tool is used to install nut rivet into materials too thin for tapping to allow use of threaded fasteners.

- Aluminum body, Cr-Mo handle, with two-tone hand grips, SCM435 jaws & SCM415 threaded mandrels.
- Suitable for aluminum and steel rivet nuts
- Suitable for aluminum, steel and stainless steel rivet.
- Includes 4 x rivet nut mandrels, M5, M6, M8 & M10
- Includes 4 x blind rivet mandrels, 3.2mm, 4.0mm, 4.8mm, 6.4mm

COMPONENT



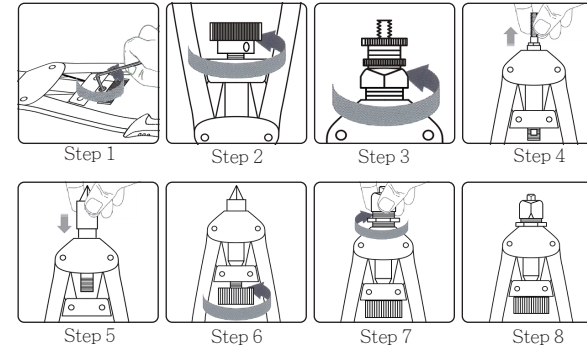
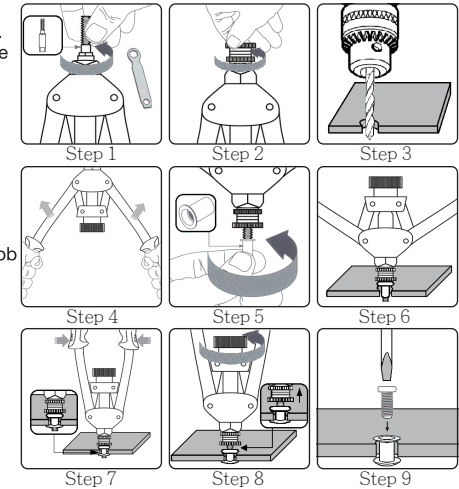
OPERATION

NUT RIVETER

1. Screw the correct size mandrel into the tool body, you may use the wrench to screw the mandrel tightly.
2. Screw the correct size nut-nosepiece into the nut-head.
3. To bore a rivet hole in workpiece.
4. Open tool handle.
5. Screw rivet nut on the head of mandrel.
6. Insert the rivet nut into workpiece.
7. Squeeze tool handle and that will make rivet nut tightly clench the workpiece.
8. Unscrew the mandrel from rivet nut by turning the mandrel knob counter-clockwise.
9. Now you can fasten a screw in the material with the rivet nut.

CAUTION: When applying rivet nuts to soft materials, it may be necessary to use the nut-lock nut to prevent over-compression of the rivet nut which could distort or weaken the work piece.

NOTE: Adjust the nut-nosepiece in or out of the nut-head of the tool until desired compression is attained, then lock in position by screwing the nut-lock nut firmly against nut-head.



SWITCH TO BLIND RIVETER FUNCTION

1. Use 2.5mm hex key to unscrew 4mm screw in mandrel knob.
2. Screw out the mandrel knob.
3. Screw out nut-head with nosepiece from body.
4. Take out nut riveter function set (mandrel and nut-inner barrel) from body.
5. Put blind riveter function set into body.
6. Screw the holder on tail of blind-inner barrel.
7. Screw the blind-head into the body.
8. Switch operation function completed.

BLIND RIVETER

WARNING Always wear eye protection when operating

1. Select correct size blind-nosepiece and screw it into blind-head.
2. Drill hole in both workpiece.
3. Open tool handle.
4. Insert the rivet mandrel into blind-nosepiece of riveter.
5. Push rivet into aligned holes in both workpieces.
6. Squeeze riveter handles firmly until rivet mandrel breaks away from rivet.
7. Open tool handles to drop out the used mandrel.

NOTE: You can setting operation angle by adjusting blind-lock nut and protruding length of blind-head. Large protruding length make great operation angle and complete operation quickly; small operation angle need more operation times but more effortless.

